



# L-7530 red SBP SRC

## Ultra Light Safety Shoes (Metal Free)



Upper : 3D X-Weaving Knitting Fabric  
 Lining : Breathable Sandwich Air Mesh  
 Insole : Superior Memory Foam Insoles  
 Outsole : EVA/Rubber Cement  
 Toecap : Composite Toecap  
 Penetration : Kevlar Midsole Plate  
 Size : EU 37-47#, UK 3-13#, US4-14#  
 CE EN ISO 20345:2011 S1P SRC

Application : Logistics, Express, Warehouse, Mechanics, Glasses Installation, Factory Workshop, Garage etc



200 JOULE TOECAP



SLIP-RESISTANT



SHOCK ABSORPTION



ANTI-STATIC



ANTI-NAIL MIDSOLE



PETROL AND CHEMICAL RESISTANT



OIL RESISTANT



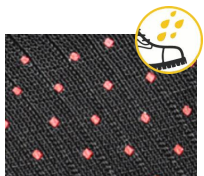
### Composite Toe Cap Protection • AN1-EN12568

It is made with light weight fiber-glass material, which can reach 200 joules from falling or rolling objects. It is stronger and more light than steel toecap.



### Kevlar Plate Protection • AN1-EN12568

Kevlar midsole plate, is zero-penetration resistant. It can resist 1100 newtons nail puncture from sharp objects. It is stronger and more flexible than steel plate.



### High Abrasion X-Weaving Fabric • CE EN ISO 20345:2011

High abrasion X-weaving fabric with thickness 1.4-1.6mm. It is treated with breathable technology to keep feet from dry during walking all days. Tear strength is required 10% higher than Europe test requirement, to reach longer lifespan.



### Slip Resistant EVA/Rubber Outsole • CE EN ISO 20345:2011

The outsole is made with EVA/Rubber material. The midsole is 40±5 degree hardness EVA, which is soft and shock absorption. The outsole is natural rubber with 5%-10% nitrile, which can pass SRC Slip-resistant test.

## Sole Bonding Strength Test

- EN ISO 20344:2011, 5.2 (Between Upper & Sole)
- Average Test Result  $5.8 \pm 5$  (N/mm)



### Upper, Lining & Bonding Strength Test Result

Upper Tear Strength $\geq$	120.0 Newtons
Upper Tensile Properties $\geq$	15.0 N/mm <sup>2</sup>
Lining Tear Strength $\geq$	15.0 N/mm
Bonding Strength $\geq$	4.0 N/mm

### ✓ Protection With Slip Resistant (SRC)

### Result

Test Requirement : SRA (Eurotile 2+Nal S) Forward Heel Slip  $\geq 0.28$  & Forward Flat Slip:  $\geq 0.32$   
 SRB (Steel Floor+Glycerine) Forward Heel Slip  $\geq 0.13$  & Forward Flat Slip:  $\geq 0.18$

PASS

Standards : EN ISO20344:2011(5.11) , SRC Means both SRA & SRB requirements are fulfilled.

### ✓ Protection With Anti-Static

### Result

Test Requirement : Anti-static  $100K\Omega$ - $1000M\Omega$  , Test Voltage:  $100 \pm 2$  V DC , Test Period: 1 Minute

PASS

Standards : EN ISO 20344:2011(5.10) Dry Humidity ( $30 \pm 5$ ) & Wet Humidity ( $85 \pm 5$ )

### ✓ Protection Resistant to Fuel Oil

### Result

Test Requirement : Change in Volume and Change in Hardness (Outsole) is No More Than +12%(\*)

PASS

Standards : EN ISO 20344:2011(8.6.1)

### SAFETOE Standard Package Instruction (Average 42# for Reference)

Shoes Weight : 1.1-1.2 KGS /Pair

Carton Weight : 12-13 KGS /Carton

1 Pair / Color Box , Dimensions :  $32 \times 21 \times 12$ CM

10 Pair / Carton , Dimensions :  $62 \times 43 \times 33$ CM



### User Instructions:

- 1.) RECOMMENDED TO USE : Construction, Logistics, Mechanics, Glasses Installation, Factory Workshop, Farming, Garden, Garage etc.
- 2.) LIMITATION TO USE: It is very important that footwear selected must be suitable for the right workplaces. The protection against risks or hazards which are not mentioned in this document is not warranted.
- 3.) FITTING & SIZE: All footwear are marked with standard size on tongue label. Some are with different size comparison, such as EU size, UK size, US size etc. Please wear footwear in a suitable size.

Footwear which are too loose or too tight may not provide optimum level of protection.

4.) STORAGE: Keep the footwear in its original packaging, under ordinary temperature, non-humidity conditions and in clean, covered and ventilated premises.

5.) CLEANING: Clean footwear regularly by high quality cleaning treatments recommended as suitable for the purpose. Don't use caustic or corrosive cleaning agents.